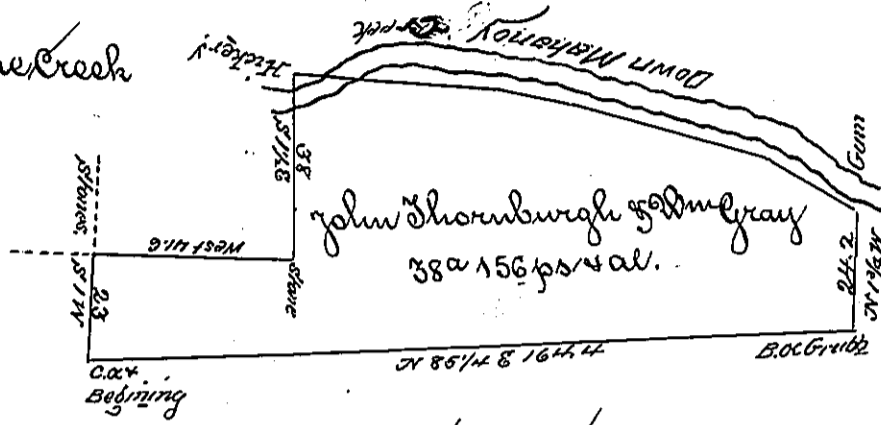


Courses & Distances Down the Creek

N 65 1/2 W 23.2
 N 75 W 42.6
~~N 80 W 72~~
 N 84 W 18
 N 89 W 42
 125.8



Vacant Mountain
 E - 269

The ^{James H. H.} ~~off~~ of a tract of land situate on the south side of Nicholson Creek in Nicho-
 lanoy in Northumberland County surveyed on the 8th day of December 1788 un-
 to John Thornburgh & Wm Gray by virtue of their warrant dated the 23^d day of
 September 1788 Survey Examined & corrected the 15th day of November 1813 & con-
 tains thirty eight acres & one hundred & fifty six perches & the usual al-
 lowance

Richard S. Peech Esqr
 Surveyor General

Tho^s Woodside ADJ

IN TESTIMONY that the above is a copy of the original remaining on file in the
 Department of Internal Affairs of Pennsylvania, made con-
 formably to an Act of Assembly approved the 16th day of
 February, 1833, I have hereunto set my Hand and caused
 the Seal of said Department to be affixed at Harrisburg, this

second _____ day of July 1896.-

James W. Patton
 Secretary of Internal Affairs.